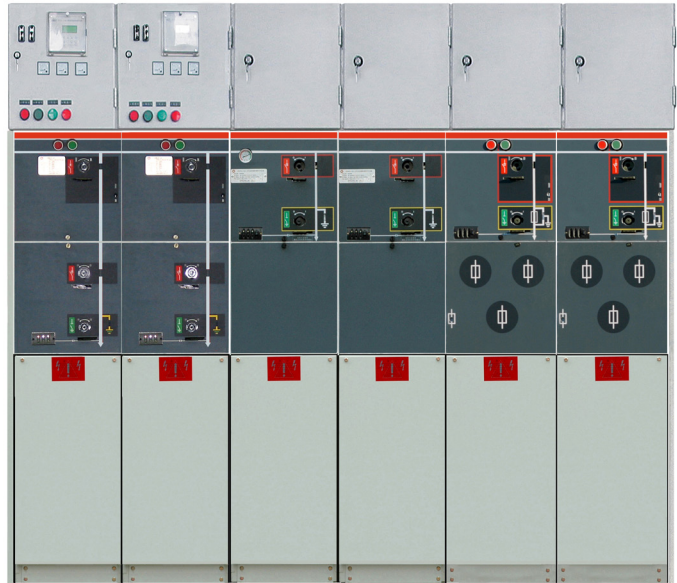


SRM16-12/24 SF6 Gas Insulated Switchgear



亚洲电力设备(深圳)股份有限公司
ASIA ELECTRICAL POWER EQUIPMENT (SHENZHEN) CO., LTD.

General Description

SRM16-12/24型SF6全绝缘紧凑型金属封闭智能开关设备（以下简称智能开关柜）采用模块化设计，以其固定式与灵活扩展的完美统一，以适合终端用户或网络节点的要求，同时满足各种配电开闭所、箱式变电站、电缆分支箱的需要，具有结构紧凑、安全可靠、长寿命、免维护的特点。

SRM16-12/24 SF6 insulated switchgear (GIS) with the adoption of the modular design, can be fixed or extended, it is suitable for end-user or network node, meanwhile meets the requirement of all kinds of power distribution substations, cabinet-type transformer substations, cable branch cabinets. It has compact structure, safety and reliability, longevity and maintenance-free.

正常使用条件：Service environment

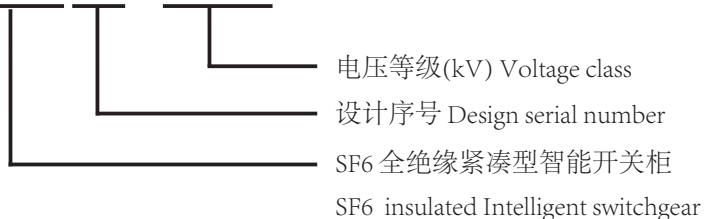
- * 海拔高度 Above sea level ≤ 2500 米（高原型 ≤ 4000 米）
- * 环境温度 Temperature environment
 - 最高温度 Maximum temperature $+ 45^{\circ}\text{C}$
 - 最低温度 Minimum temperature $- 40^{\circ}\text{C}$
- * 湿度 Humidity
 - 日平均湿度 Daily average humidity $\leq 95\%$
 - 月平均湿度 Monthly average humidity $\leq 90\%$
- * 抗震能力 Earthquake-resistance
 - 地震烈度不超过8度 Earthquake less than 8 degree

技术特性 Technical Features

- * SF6气体压力 20℃下为0.4bars(相对压力)
 - SF6 gas pressure 0.4bars under 20℃ (relative pressure)
- * 年泄漏率 $\leq 0.01\%$ /年
 - Annual leakage rate $\leq 0.01\%$ /year
- * 浸水试验 水下施加0.3bars的压力/24小时
 - Soaking testing Under water of 0.3bars pressure/24 hours
- * 燃弧试验 有灭弧器25kA/1s 无灭弧器16kA/1s
 - Arc testing With arc extinguisher 25kA/1s;
Without arc extinguisher 16kA/1s
- * 防护等级 Protection degree
 - SF6气室 SF6 Gas tank IP67
 - 熔断器筒 Fuse external shell IP67
 - 开关柜外壳 Switch cabinet shelter IP3X
- * 母线 Bus bar
 - 开关柜内母线 Bus bar inside cubicle 400mm^2 Cu
 - 开关柜接地母线 Earthing bus bar of the cubicle 150mm^2 Cu
 - 螺栓直径 Bolt diameter: M10
- * 气室不锈钢壳厚度 Thickness of stainless steel gas tank 3.0mm

型号含义 Description of model number

SRM 16 - 12/24



技术参数 Technical Specification

序 No.	名称 item	单位 unit	C模块 C module	F模块 F module	V模块 V module		CB模块 CB module	
			负荷开关 load break switch	组合电器 switch fuse	真空开关 vacuum switch	隔离/接地开关 isolate/earthing switch	真空断路器 vacuum circuit breaker	隔离/接地开关 isolate/earthing switch
1	额定电压 rated voltage	kV	12/24	12/24	12/24	12/24	12/24	12/24
2	工频耐受电压 Power frequency withstand voltage	kV	42/65	42/65	42/65	42/65	42/65	42/65
3	雷电冲击耐受电压 impulse withstand voltage	kV	95/125	95/125	95/125	95/125	95/125	95/125
4	电流 rated current	A	630	注 note1	630		630、1250	
5	转移电流 closed loop	A		1750				
6	5%额定有功负载开断电流 5% rated active load drop-out current	A	630					
7	电缆充电开断电流 off load cable charging	A	135					
8	5%额定有功负载开断电流 5% rated active load drop-out current	A	31.5					
9	接地故障开断电流 earth fault breaking current	A	200/150					
10	接地故障时电缆充电的开断电流 when earth fault, drop-out current of cable charging	A	115/87					
11	短路开断电流 short circuit drop-out current	kA		注 note2	20/16		31.5	
12	关合能力 making capacity	kA	63/50	注 note2	50/40	50/40	63/80	80
13	短时耐受电流 3秒 short time current 3s	kA	-/21		/16			
14	短时耐受电流 4秒 short time current 4s	kA	25/		20/		31.5	31.5
15	机械寿命 mechanical life	次	5000	5000	5000	5000	10000	5000

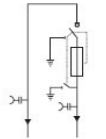
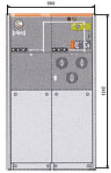
注：1: 取决于熔断器的电流额定值；2: 受限于高压熔断器
note: 1 varies with rated current value of fuse; 2 limited by high voltage fuse.
遵循：Comply with:

IEC60298 IEC60265 IEC60129 IEC60694 IEC60420 IEC60056
GB3906-2006 GB11022-2011 GB1985-2004 GB6926-2009 GB3804-2004 GB1984-2003 GB3309-89

SRM16-12/24型智能开关柜提供以下标准组合

Each module type has following standard configuration

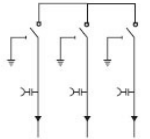
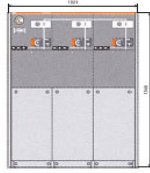
DF



标准 2 路 DF (260 kg)

Standard 2 units DF (260kg)

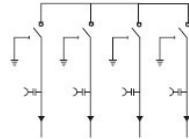
CCC



标准 3 路 CCC (300 kg)

Standard 3 units CCC (300kg)

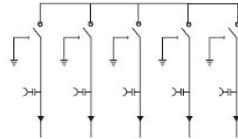
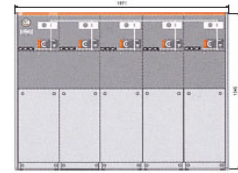
CCCC



标准 4 路 CCCC (390 kg)

Standard 4 units CCCC (390kg)

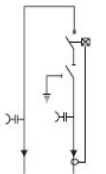
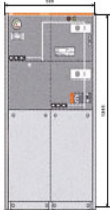
CCCCC



标准 5 路 CCCCC (480 kg)

Standard 5 units CCCCC (480kg)

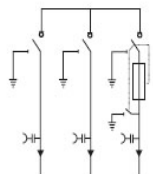
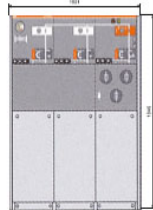
DV



标准 2 路 DV (252 kg)

Standard 2 units DV (252kg)

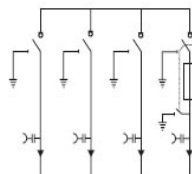
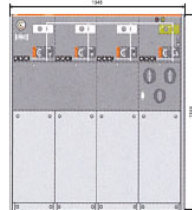
CCF



标准 3 路 CCF (320 kg)

Standard 3 units CCF (320kg)

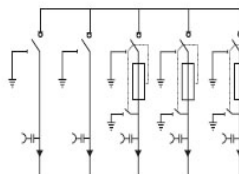
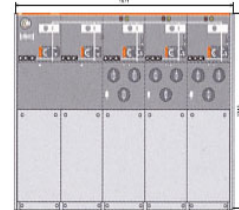
CCCF



标准 4 路 CCCF (410 kg)

Standard 4 units CCCF (410kg)

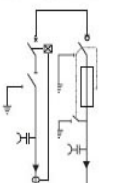
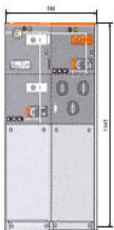
CCFFF



标准 5 路 CCFFF (540 kg)

Standard 5 units CCFFF (540kg)

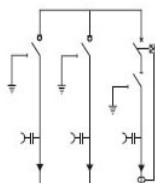
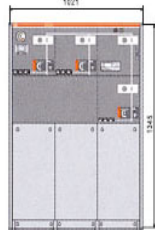
VF



标准 2 路 VF (270 kg)

Standard 2 units VF (270kg)

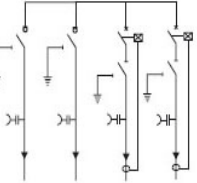
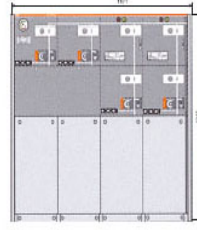
CCV



标准 3 路 CCV (313kg)

Standard 3 units CFC (320kg)

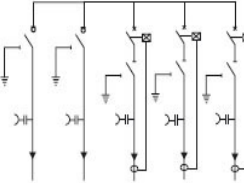
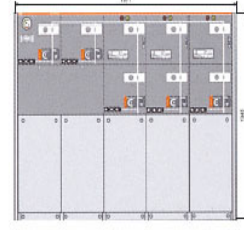
CCVV



标准 4 路 CCVV (430 kg)

Standard 4 units CCVV (430kg)

CCVVV



标准 5 路 CCVVV (509 kg)

Standard 5 units CCVVV (509kg)

SRM16-12/24型智能开关柜的每个模块具有下列标准配置

Each module of SRM16-24 GIS has the following standard configurations

- * 630A母线 630A Bus bar
- * 三工位单弹簧操作机构，有两个独立的负荷开关和接地开关操作轴
Single spring mechanism for 3 working positions,
2 independent operating shafts for load break switch and earth switch
- * 电动机构 Motorized operation mechanisms
- * 负荷开关和接地开关位置指示
Indication of the position of load break switch and earth switch
- * 位于前部水平布置的进线套管，630A的400系列螺栓式套管
Incoming cable bushing horizontally locates in front of the switch, 400 series bolt type bushing of 630A
- * 对于所有的开关功能，都在面板上有方便的加装挂锁装置
Convenient lock equipment on the panel for all the switch on/off functions
- * 接地母排 Earthing bus bar
- * 预留母线扩展 busbar extension reserve
- * 进线套管的电容性电压指示器
Voltage indicator of incoming bushing capacitive character
- * 每个SF6气箱中仅安装一只监测SF6密度的压力表
One SF6 gas meter for each gas cell
- * 吊装用的吊耳 lifting ring
- * 操作手柄 Operating handle

注：确认合同时需注明采用扩展情况

Note: please indicate expanding module when sign contract.



F



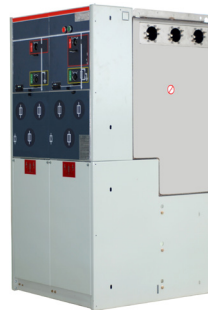
C



CC



CF



FF



CCF

扩展组件 Expanding components

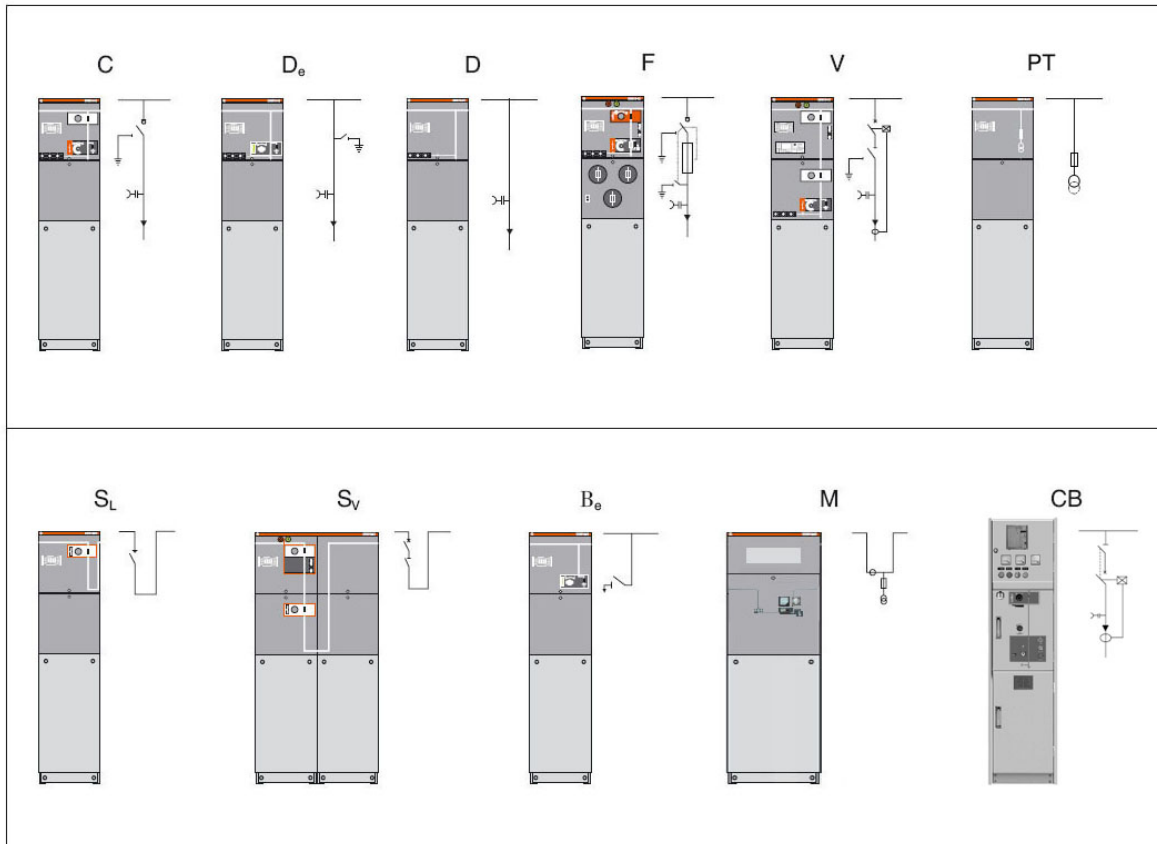
见安装说明第18页

Please see page 18 of installation instructions



可用的模块 Available modules

C 智能负荷开关模块	(宽度=325mm)
C Intelligent Load break switch module	(Width = 325mm)
De 带接地刀的电缆连接模块	(宽度=325mm)
De Cable connection module with earthing switch	(Width = 325mm)
D 不带接地刀的电缆连接模块	(宽度=325mm)
D Cable connect module without earthing switch	(Width = 325mm)
F 智能负荷开关熔断器组合电器模块	(宽度=325mm)
F Intelligent Load break switch and fuse combination module	(Width = 325mm)
V 智能真空断路器模块	(宽度=325mm)
V Intelligent Vaccum switch module	(Width = 325mm)
SL 智能母线分段开关模块 (负荷开关)	(宽度=325mm)
SL Intelligent Bus bar section module (load break switch)	(Width = 325mm)
Sv 智能母线分段开关模块 (真空断路器)	(总宽度=650mm)
Sv Intelligent Bus bar section breaker module (vacuum switch)	(Width = 650mm)
Be 母线接地模块	(宽度=325mm)
Be Bus bar earth module	(Width = 325mm)
M 计量模块	(宽度=750、900mm)
M Metering module	(Width = 750、 900mm)
CB 智能真空断路器模块	(宽度=500mm)
CB Intelligent Vaccum circuit breaker module	(Width = 500mm)
PT 智能电源模块	(宽度=500、750mm)
PT Intelligent power module	(Width = 500、 750mm)



Intelligent Load Break Switch Module C

标准配置与特性

Standard Configuration and Features

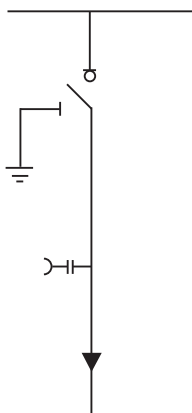
- * 630A母线 630A Bus bar
- * 三工位负荷/接地开关
3 working positions: on/off and earth switch
- * 三工位单弹簧操作机构，有两个独立的负荷开关和接地开关操作轴
Single spring mechanism for 3 working positions, 2 independent operating shafts for load break switch and earth switch
- * 负荷开关和接地开关位置指示
Indication of the position of load switch and earth switch
- * 位于前部水平布置的进线套管，630A的400系列螺栓式套管
Incoming cable bushing horizontally locates in front of the switch, 400 series bolt type bushing of 630A
- * 进线套管的电容性电压指示器
Voltage indicator of incoming bushing capacitive character
- * 对于所有的开关功能，都在面板上有方便的加装挂锁装置
Convenient lock equipment on the panel for all the switch on/off functions
- * 每个SF6气箱中仅安装一只监测SF6密度的压力计
One SF6 density/pressure monitor(gas meter) for each gas cell
- * 接地母排 Earthing bus bar

智能控制配置与特性 Configuration and features of intellingent control

- * 负荷开关操作用电动机 24V/48V DC， 110V/220V DC/AC
Motor for load break switch operation 24V/48V DC， 110V/220V DC/AC
- * 短路及接地故障指示器
Indicator of short circuit and earthing malfunction
- * 测量环形电流互感器及电流表
Mutual-inductor of ring current measuring and ampere meter
- * 计量环形电流互感器及电度表
Mutual-inductor of ring current measuring and watt-hour meter
- * 进线带电接地闭锁（当套管带电时闭锁接地开关） 110V/220V AC
Earth electrical lock of incoming electrification 110V/220V AC
- * 辅助触点 Auxiliary contactors
负荷开关位置 2NO+2NC Load break switch position 2NO+2NC
接地开关位置 2NO+2NC Earthing switch position 2NO+2NC
带信号的的压力表 1NO Pressure meter with signal 1NO
带信号触点的灭弧器 1NO Arc extinguisher with signal contactor 1NO
- * 二次装置可装设于
开关柜顶部的二次线小室
Secondary devices cabinet on the top of switchgear
开关柜顶部的低压箱
Low-pressure cabinet on the top of switchgear

可选配置与特性 Optional Configuration and Features

- * 预留母线扩展 Bus bar extension reserve
- * 外部母线 External bus bar
- * 接地开关与电缆室前面板的联锁
Interlock between earthing switch and front panel of cable section
- * 在电缆进线套管处可加装避雷器或双电缆头
Lightning arrester or double cable connectors at the incoming cable bushing
- * 钥匙可锁 Lock with keys



标准配置与特性

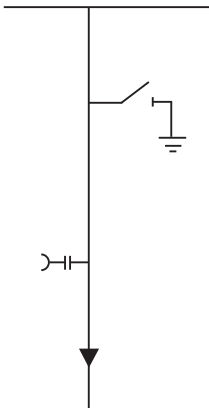
Standard Configuration and Features



- * 630A母线 630A Bus bar
- * 接地开关 Earth switch
- * 两工位单弹簧操作机构 Single spring mechanism for 2 working positions
- * 接地开关位置指示 Position indication of earth switch
- * 位于前部水平布置的进线套管，630A的400系列螺栓式套管
Incoming cable bushing horizontally locates in front of the switch, 400 series bolt type bushing of 630A
- * 进线套管的电容性电压指示器
Voltage indicator of incoming bushing capacitive character
- * 对于所有的开关功能，都在面板上有方便的加装挂锁装置
Convenient padlocks for all the switch on/off functions
- * 每个SF6气箱中仅安装一只监测SF6密度的压力计
One SF6 gas meter for each gas cell
- * 接地母排 Earthing bus bar

智能控制配置与特性 Configuration and features of intellingent control

- * 负荷开关操作用电动机 24V/48V DC， 110V/220V DC/AC
Motor for load break switch operation 24V/48V DC， 110V/220V DC/AC
- * 短路及接地故障指示器
Indicator of short circuit and earthing malfunction
- * 测量环形电流互感器及电流表
Current transformer for measuring ring current and current meter
- * 计量环形电流互感器及电度表
Mutual-inductor of ring current measuring and energy meter
- * 进线带电接地闭锁（当套管带电时闭锁接地开关） 110V/220V AC
Earthing electrical lock for incoming electrification 110V/220V AC
(Lock the earth switch when bushing is electrified)
- * 辅助触点 Auxiliary contactors
接地开关位置 2NO+2NC Earthing switch position 2NO+2NC
带信号的的压力表 1NO Pressure meter with signal 1NO
带信号触点的灭弧器 1NO Arc extinguisher with signal contactor 1NO
- * 二次装置可装设于 Secondary devices can be installed in:
开关柜顶部的二次线小室 Secondary devices cabinet on the top of switchgear
开关柜顶部的低压箱 Low voltage cabinet on the top of switchgear



可选配置与特性 Optional Configuration and Features

- * 预留母线扩展 Bus bar extension reserve
- * 外部母线 External bus bar
- * 接地开关与电缆室前面板的联锁
Interlock between earthing switch and front panel of cable section
- * 在电缆排线套管处可加装MWD型避雷器或双电缆头
MWD type lightning arrester or double cable connectors can be added at the incoming cable bushing
- * 钥匙互锁（如Ronis锁） Intelock with keys (eg.Ronis lock)

不带接地刀模块 D Module without earth switch

标准配置与特性 Standard Configuration and Features

- * 630A母线 630A Bus bar
- * 位于前部水平布置的进线套管，630A的400系列螺栓式套管
incoming cable bushing horizontally locates in front of the switch,
400 series bolt type bushing of 630A
- * 进线套管的电容性电压指示器
Voltage indicator of incoming bushing capacitive character
- * 每个SF6气箱中仅安装一只监测SF6密度的压力计
One SF6 gas meter for each gas cell
- * 接地母排 Earthing bus bar

智能控制配置与特性 Configuration and features of intellingent control

- * 短路及接地故障指示器 Indicator of short circuit and earthing malfunction
- * 测量环形电流互感器及电流表
Current transformer for ring current measuring and current meter
- * 计量环形电流互感器及电度表
Current transformer for ring current measuring and energy meter
- * 二次装置可装设于 Secondary devices can be installed in:
开关柜顶部的二次线小室 Secondary devices cabinet on the top of switchgear
开关柜顶部的低压箱 Low voltage cabinet on the top of switchgear

可选配置与特性 Optional Configuration and Features

- * 预留母线扩展 Bus bar extension reserve
- * 外部母线 External bus bar
- * 在电缆排线套管处可加装MWD型避雷器或双电缆头
MWD type lightning arrester or bouble cable connectors at the incoming cable bushing



母线接地模块 Be Busbar earth Module Be

标准配置与特性 Standard Configuration and Features

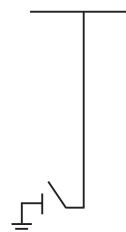
- * 630A母线 630A Bus bar
- * 接地开关 Earthing Switch
- * 两工位单弹簧操作机构 Single spring mechanism with 2 working positions
- * 接地开关位置指示 Indication of earth switch position
- * 对于所有的开关功能，都在面板上有方便的加装挂锁装置
Convenient padlock for all the on/off functions
- * 每个SF6气箱中仅安装一只监测SF6密度的压力计
One SF6 gas meter for each gas cell
- * 接地母排 Earthing bus bar

智能控制配置与特性 Configuration and features of intellingent control

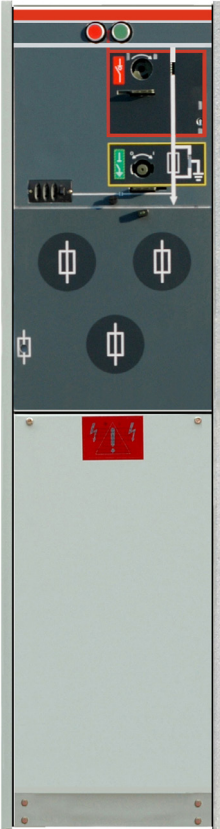
- * 辅助触点 Auxiliary contactors
接地开关位置 2NO+2NC Earthing switch position 2NO+2NC
带信号的压力表 1NO Pressure meter with signal 1NO
- * 二次装置可装设于 Secondary devices can be installed in:
开关柜顶部的二次线小室 Secondary devices cabinet on the top of switchgear
开关柜顶部的低压箱 Low voltage cabinet on the top of switchgear

可选配置与特性 Optional Configuration and Features

- * 预留母线扩展 bus bar extension reserve
- * 外部母线 External bus bar
- * 钥匙互锁 (如Ronis锁) Interlock by keys (eg.Ronis lock)



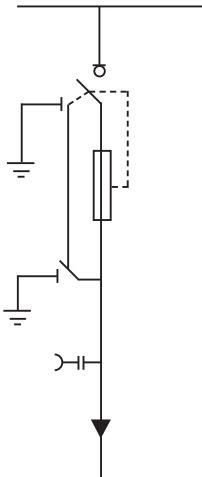
标准配置与特性 Standard Configuration and Features



- * 630A母线 630A Bus bar
- * 三工位的负荷开关 + 熔断器首端与熔断器末端接地开关为机械联动
3 working positions: on/off and earthing switch
- * 三工位双弹簧操作机构, 有两个独立的负荷开关和接地开关操作轴
Double spring mechanism for 3 working positions,
2 independent operating shafts of load break switch and earth switch
- * 负荷开关和接地开关位置指示
Position indication of load break switch and earthing switch
- * 熔断器筒 Fuse bushing
- * 熔断器水平放置 Horizontal placement of fuse
- * 熔断器跳闸指示 Tripping indication of fuse
- * 位于前部水平布置的进线套管, 200A的200系列插入式套管
incoming cable bushing horizontally locates in front of the switch,
400 series insert type bushing of 200A
- * 进线套管的电容性电压指示器
Voltage indicator of incoming bushing capacitive character
- * 对于所有的开关功能, 都在面板上有方便的加装挂锁装置
Convenient lock equipment on the panel for all the switch on/off functions
- * 每个SF6气箱中仅安装一只监测SF6密度的压力表
One SF6 gas meter for each gas cell
- * 接地母排 Earthing bus bar
- * 用于变压器保护的熔断器 Protective fuse for transformer

智能控制配置与特性 Configuration and features of intellingent control

- * 负荷开关操作用电动机 24V/48V DC, 110V/220V DC/AC
Motor for load break switch operation 24V/48V DC, 110V/220V DC/AC
- * 并联跳闸线圈 24V/48V DC, 110V/220V DC/AC
Paralleling tripping coil 24V/48V DC, 110V/220V DC/AC
- * 并联合闸线圈 24V/48V DC, 110V/220V DC/AC
Paralleling closing coil 24V/48V DC, 110V/220V DC/AC
- * 测量环形电流互感器及电流表
Mutual-inductor of ring current measuring and current meter
- * 计量环形电流互感器及电度表
Mutual-inductor of ring current measuring and energy meter
- * 辅助触点 Auxiliary contactors
负荷开关位置 2NO+2NC Load break switch position 2NO+2NC
接地开关位置 2NO+2NC Earthing switch position 2NO+2NC
熔断器熔断 1NO Fuse melting 1NO
带信号的的压力表 1NO Pressure meter with signal 1NO
带信号触点的灭弧器 1NO Arc extinguisher with signal contactor 1NO
- * 二次装置可装设于 Secondary devices can be installed in:
开关柜顶部的二次线小室 Secondary devices cabinet on the top of switchgear
开关柜顶部的低压箱 Low voltage cabinet on the top of switchgear



可选配置与特性 Optional Configuration and Features

- * 预留母线扩展 Bus bar extension reserve
- * 外部母线 External bus bar
- * 接地开关与电缆室前面板的联锁
Interlock between earthing switch and front panel of cable section
- * 进线带电接地闭锁 (当套管带电时闭锁接地开关) 110V/220V AC
Earth electrical lock of incoming electrification 110V/220V AC
(Lock the earth switch on when bushing is electrified)

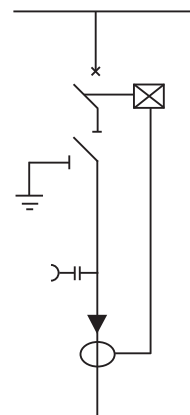
标准配置与特性 Standard Configuration and Features

- * 630A母线 630A Bus bar
- * 630A的变压器/线路保护用真空开关 630A transformer/circuit protective vacuum switch
- * 真空断路器用两工位双弹簧操作机构
Double spring mechanism with 2 working position for VCB
- * 真空断路器下部三工位隔离/接地开关
3-working-position insulator and earthing switch at the lower part of VCB
- * 三工位隔离/接地开关单弹簧操作机构
Single spring mechanism with 3-working-position insulator and earthing switch
- * 真空断路器和三工位开关机械联锁
Mchanical interlock between VCB and 3-working-position switch
- * 真空断路器和三工位开关位置指示
Position indication of vacuum switch and 3-working-position Switch
- * 自供电型电子式保护继电器SEG-WIC1 (带保护CT)
Protective relay SEG-WIC1 with self power supply(with protective CT)
- * 跳闸线圈 (用于继电器动作) Tripping coil (for relay's action)
- * 位于前部水平布置的进线套管, 630A的400系列螺栓式套管
Imcoming cable bushing horizontally locates in front of the switch, 400 series bolt type bushing of 630A
- * 进线套管的电容性电压指示器 Voltage indicator of incoming bushing capacitive character
- * 对于所有的开关功能, 都在面板上有方便的加装挂锁装置
Convenient padlocks for all the switch on/off functions
- * 每个SF6气箱中仅安装一只监测SF6密度的压力计
One SF6 gas meter for each gas cell
- * 接地母排 Earthing bus bar



智能控制配置与特性 Configuration and features of intellingent control

- * 真空开关操作用电动机 24V/48V DC, 110V/220V DC/AC
Motor for vacuum switch operation 24V/48V DC, 110V/220V DC/AC
- * 并联跳闸线圈 24V/48V DC, 110V/220V DC/AC
Paralleling tripping coil 24V/48V DC, 110V/220V DC/AC
- * 并联合闸线圈 24V/48V DC, 110V/220V DC/AC
Paralleling closing coil 24V/48V DC, 110V/220V DC/AC
- * 测量环形电流互感器及电流表
Mutual-inductor of ring current measuring and ampere meter
- * 计量环形电流互感器及电度表
Mutual-inductor of ring current measuring and watt-hour meter
- * 钥匙互锁 (如Roins锁) Interlock by keys (eg.Ronis lock)
- * 进线带电接地闭锁 (当套管带电时闭锁接地开关) 110V/220V AC
Earth electrical lock of incoming electrification 110V/220V AC
(Lock the earth switch on when bushing is electrified)
- * 辅助触点 Auxiliary contactors
真空开关位置 2NO+2NC Vacuum switch position 2NO+2NC
隔离开关位置 2NO+2NC Insulator position 2NO+2NC
接地开关位置 2NO+2NC Earthing switch position 2NO+2NC
真空开关跳闸信号 1NO Tripping signal of vacuum switch 1NO
带信号的的压力表 1NO Pressure meter with signal 1NO
带信号触点的灭弧器 1NO Arc extinguisher with signal contactor 1NO
- * 二次装置可装设于 Secondary devices can be installed in:
开关柜顶部的二次线小室 Secondary devices cabinet on the top of switchgear
开关柜顶部的低压箱 Low voltage cabinet on the top of switchgear
- * 其它继电器如SPAJ140C Other relays as SPAJ140



可选配置与特性 Optional Configuration and Features

- * 预留母线扩展 Bus bar extension reserve
- * 外部母线 External bus bar
- * 接地开关与电缆室前面板的联锁
Interlock between earthing switch and front panel of cable section

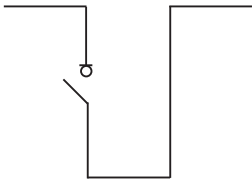


标准配置与特性 Standard Configuration and Features

- * 二工位负荷开关 two working position load switch
- * 630A母线 630A Bus bar
- * 三工位单弹簧操作机构，有独立的负荷开关操作轴
Single spring mechanism for 3 working positions, has independent operating shafts of load break switch
- * 对于所有的开关功能，都在面板上有方便的加装挂锁装置
Convenient padlock on the panel for on/off function
- * 每个SF6气箱中仅安装一只监测SF6密度的压力表计
One SF6 gas meter for each gas cell
- * 接地母排 Earthing bus bar

智能控制配置与特性 Configuration and features of intellingent control

- * 负荷开关操作用电动机 24V/48V DC, 110V/220V DC/AC
Motor for load break switch operation 24V/48V DC, 110V/220V DC/AC
- * 辅助触点 Auxiliary contactors
负荷开关位置 2NO+2NC Load break switch position 2NO+2NC
接地开关位置 2NO+2NC Earthing switch position 2NO+2NC
- * 二次装置可装设于 Secondary devices can be installed in:
开关柜顶部的二次线小室 Secondary devices cabinet on the top of switchgear
开关柜顶部的低压箱 Low voltage cabinet on the top of switchgear

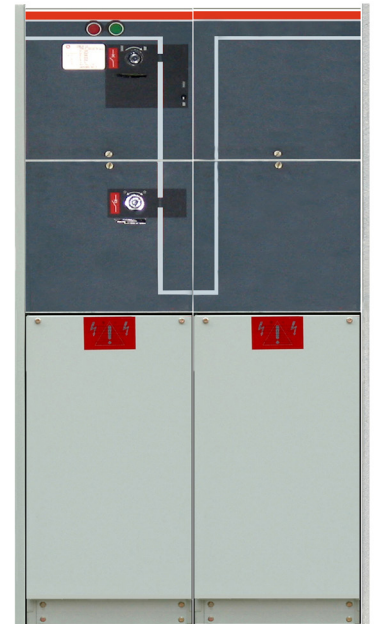


可选配置与特性 Optional Configuration and Features

- * 预留母线扩展 Bus bar extension reserve
- * 外部母线 External bus bar
- * 钥匙互锁（如Roins锁） Interlock by keys (eg.Ronis lock)

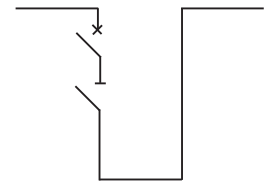
标准配置与特性 Standard Configuration and Features

- * 630A母线 630A Bus bar
- * 630A的真空断路器 630A VCB
- * 真空断路器用两工位双弹簧操作机构
2 working postions and double springs mechanism for vacuum circuit breaker
- * 真空断路器下部隔离开关
Disconnecting switch for lower part of vacuum switch
- * 隔离开关单弹簧操作机构
Single spring mechanism for disconnecting switch
- * 真空断路器和隔离开关机械联锁
Mechanical interlock between vacuum switch and insulator
- * 真空断路器和隔离开关位置指示
Position indication of vacuum switch and disconnecting switch
- * 对于所有的开关功能，都在面板上有方便的加装挂锁装置
Convenient padlock for all the switch on/off functions
- * 每个SF6气箱中仅安装一只监测SF6密度的压力表计
One SF6 gas meter for each gas cell
- * Sv总是与母线提升柜相连
SV is always connected with bus bar connection unit



智能控制配置与特性 Configuration and features of intellingent control

- * 真空开关操作用电动机 24V/48V DC, 110V/220V DC/AC
Motor for load break switch operation 24V/48V DC, 110V/220V DC/AC
- * 并联跳闸线圈24/48V DC,110V/220V DC/AC
Paralleling tripping coil 24/48 DC, 110V/220V DC/AC
- * 并联合闸线圈24/48V DC,110V/220V DC/AC
Paralleling Closing coil 24/48 DC, 110V/220V DC/AC
- * 辅助触点 Auxiliary contactors
真空开关位置 2NO+2NC Vacuum switch position 2NO+2NC
负荷开关位置 2NO+2NC Load break switch position 2NO+2NC
接地开关位置 2NO+2NC Earthing switch position 2NO+2NC
- * 二次装置可装设于 Secondary devices can be installed in:
开关柜顶部的二次线小室 Secondary devices cabinet on the top of switchgear
开关柜顶部的低压箱 Low voltage cabinet on the top of switchgear



可选配置与特性 Optional Configuration and Features

- * 预留母线扩展 Bus bar extension reserve
- * 外部母线 External bus bar
- * 钥匙互锁（如Roins锁） Interlock by keys (eg.Ronis lock)



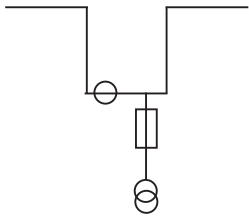
计量柜 Messuring Cabinet

标准配置与特性 Standard Configuration and Features

- * 2只电流互感器 2 current mutual-inductors
- * 2只电压互感器 2 voltage mutual-inductors
- * 6只套管, 用于外母线连接 6 bushings, for external bus bar connection
- * 保护PT的熔断器 Protective fuse for PT

可选配置与特性 Optional Configuration and Features

- * 3只电流互感器 3 current mutual-inductors
- * 3只电压互感器 3 voltage mutual-inductors
- * 避雷器 Lightning arrester
- * 指示开关柜带电的容性电压指示器 Electrification indicator
- * 低压组成部分 Low voltage element
 - 1只带转换开关的电压表 1 voltage meter with alternation switch
 - 1只带转换开关的电流表 1 current meter with alternation switch
 - 1只有功电度表 1 active ampere meter
 - 1只无功电度表 1 reactive ampere meter



电压互感器柜 Voltage mutual-inductor cabinet

标准配置与特性 Standard Configuration and Features

- * 下部电缆进/出线 Lower part incoming/outgoing cable
- * 2只电压互感器 2 voltage mutual-inductors
- * 保护PT的熔断器 Protective fuse for PT

可选配置与特性 Optional Configuration and Features

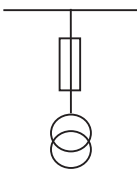
- * 3只电压互感器 3 voltage mutual-inductors
- * 避雷器 Lightning arrester
- * 指示开关柜带电的容性电压指示器 Electrification indicator
- * 低压组成部分 Low voltage element
 - 1只带转换开关的电压表 1 voltage meter with alternation switch



电源PT柜 PT Cabinet

标准配置与特性 Standard Configuration and Features

- * 上进/出 upper lead-in/out
- * 1只电源PT 1 power PT
- * 2个高压熔断器 2 high voltage fuse
- * 1套高压电缆接头 1 set high voltage cable connector
- * 1个带电显示器 1 current indicator
- * 1只电压表 1 voltage meter

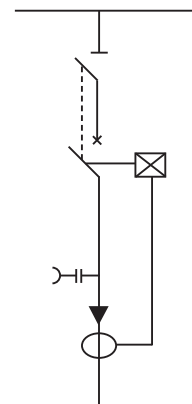


标准配置与特性 Standard Configuration and Features

- * 1250A/630A的母线 1250A/630A bus bar
- * 1250A/630A的线路保护用真空断路器
Protective vacuum circuit breaker for 1250A/630A circuit
- * 真空断路器电动操作
motorized mechanism for vacuum circuit breaker
- * 真空断路器上部三工位隔离/接地开关电动/手动操作
Manual/motorized mechanism for the upper 3-working-position insulator/ earthing switch of vacuum circuit breaker
- * 保护与控制单元 AEP2010 保护系列 (带保护 CT)
Protection and control unit AEP2010 (with protective CT)
- * 分励脱扣线圈 110V/220V DC Unbuckle trip coil 110V/220V DC
- * 合闸线圈 110V/220V DC Closing coil 110V/220V DC
- * 位于前部水平布置的出线套管
Horizontal outgoing cable bushing at the front
- * 1250A/630A的1250系列螺栓式套管
1250A/630A series 1250 bolt type bushing
- * 指示套管带电的容性电压指示器
Electrification indicator
- * 1250A/630A的预留母线扩展
1250A/630A bus bar extension reserve
- * 每个SF6气箱中仅安装一只监测SF6密度的压力表计
One SF6 gas meter for each gas cell
- * 宽×高×深 = 500×2100×1000mm (以实物为准)
W x H x D = 500 x 2100 x 1000mm
- * 合分顺序: O - 0.3s CO - 180s CO
Open and close turns O - 0.3s CO - 180s CO

选择配置与特性 Optional Configuration and Features

- * 进线电缆处加装避雷器
Lightning arrester at the section of incoming cable



SRM16-12/24型充气柜提供了两种变压器保护方式，负荷开关熔断器组合电器和具有继电保护的断路器

SRM16-12/24 type GIS provides two kinds of transformer protections:

1. load break switch and fuse combination
2. circuit breaker with protective relay

用于负荷开关熔断器组合电器模块 Load break switch and fuse combination

变压器保护为限流高压熔断器与负荷开关的组合。熔断器室安装在一个位于单元前部独立的有闭锁的外壳后面。负荷开关使用弹簧储能机构，该机构可由熔断器撞针所触发。

Transformer protection is a combination of current-limiting fuse and load break switch. Fuse section is installed on the back of an independent lockable shell in front of the unit. Load break switch adopts spring energy storage mechanism which can be activated by the fuse striker.

为了便于熔断器的更换，可以使用操纵柄来拆卸熔断器室的端盖。熔断器的跳闸机构前置，保证了整个系统的防水性能。

For ease replacement of the fuse, the operating handle can be used for unloading the fuse bushing. The fuse tripping mechanism is placed in the front, which guarantees the performance of waterproof for whole system.

Rated capacity for transformer (kVA)

100%	变压器额定容量 (kVA)															
UN(kV)	25	50	75	100	125	160	200	250	315	400	500	630	800	1000	1250	1600
3	16	25	25	40	40	50	50	80	100	125	160	160				
3.3	16	25	25	40	40	50	50	63	80	100	125	160				
4.15	10	16	25	25	40	40	50	50	63	80	100	125	160			
5	10	16	25	25	25	40	40	50	50	63	80	100	160	160		
5.5	6	16	16	25	25	25	40	50	50	63	80	100	125	160		
6	6	16	16	25	25	25	40	40	50	50	80	100	125	160	160	
6.6	6	16	16	25	25	25	40	40	50	50	60	80	100	125	160	
10	6	10	10	16	16	25	25	25	40	40	50	50	80	80	125	125
11	6	6	10	16	16	25	25	25	40	40	50	50	63	80	100	125
12	6	6	10	16	16	16	25	25	25	40	40	50	63	80	100	125
13.8	6	6	10	10	16	16	25	25	25	25	40	50	50	63	80	100
15	6	6	10	10	16	16	16	25	25	25	40	40	50	63	80	100
17.5	6	6	6	10	10	16	16	16	25	25	25	40	50	50	63	80
20	6	6	6	10	10	16	16	16	25	25	25	40	40	50	63	63
22	6	6	6	6	10	10	16	16	16	25	25	25	40	50	50	63
24	6	6	6	6	10	10	16	16	16	25	25	25	40	40	50	63

* 免维护全密封 Fully sealed and maintenance-free

SF6气体绝缘环网柜对恶劣环境的高适应性，决定了设备操作结构也必须具备很强的抗腐蚀、防锈蚀能力。为此，我们专门设计了全密封不锈钢气箱，将操作开关密封在封闭的金属箱体内，完全杜绝了盐雾、水汽影响而导致机构与开关传动不正常。同时，更加方便现场升级为电动操作机构。完全实现免维护。

SF6 gas insulated ring main unit has high adaptability to the harsh environment, determines the equipment operation structure also must have a strong ability to resist corrosion and rust protection. So we designed a fully sealed gas stainless steel enclosed metal box, to completely eliminate the influence of salt fog, vapor. At the same time, it is more convenient for upgrading to electric operation mechanism.

* 接地 Grounding

SF6气体绝缘环网柜所有功能单元，如负荷开关（断路器、组合电器）、母线、套管等全部为单独的模块化设计，所有绝缘模块表面均涂覆导电或半导电屏蔽层；模块与模块间的导电或半导电屏蔽层连接后与金属壳体通过铜质导体可靠接触；

SF6 gas insulated ring main units switchgear, such as load switch (circuit breaker, combination electric appliance), busbar, casing, etc are all single modular design, all insulation module surface coated with conductive or semi-conductive shield; After the connection between modules and the modules of conductive or semi-conductive shield, it is reliable to connect the metal shell by copper conductor.

接地导体全部采用铜质导体，在规定的接地故障条件下，额定短路持续时间为4s时，电流密度不超过110A/mm²，接地铜排最小截面积不小于30mm²。

接地导体的末端使用铜质端子与设备的接地系统相连接，端子的电气接触面积与接地导体的截面相适应。

Grounding conductor all adopt the copper conductor, under the condition of the rules of ground fault, rated short circuit duration of 4s, the current density of not more than 110A/mm², grounding copper minimum cross-sectional area not less than 30mm²

Grounding copper conductor connected to equipment grounding system via copper terminal, terminal of the contact area equal to the grounding conductor of the electrical section.

* 接地三工位开关 Three-position-switch

一次开关负荷侧装有隔离或负荷开关—接地三工位开关。目的在于将需要检修的电气设备用隔离开关、负荷开关与电网的带电部分可靠的隔离，使被检修的电气设备与电源有明显的断开点，以保证检修工作的安全。与主开关实现可靠的五防联锁。

Primary switch load side is equipped with isolation or load break switch with grounding three-position. When repairing electrical equipment, make the charged part isolated to ensure the safety of repair work. With the main switch to realize reliable five-anti interlock protection.

* 带电显示（缺相保护）装置 Voltage indicator device (Open phase protection)

该装置安装于柜体前操作面板，通过检测电压信号判断电缆侧是否带电。带电回路发出灯光闪烁。当其中任意一相发生无电压信号时（其它相有电），则该相指示灯灭，并发出相应的蜂鸣报警。

The device is installed in the cabinet and shows on operation panel. The voltage signals can indicate that if charged. The lights flicker if it was charged. As one arbitrary phase occurs when no voltage signal, then the light out, and a corresponding buzzer alarm.

* 接地、短路二合一型面板故障指示器 Grounding, short circuit fault indicator type epoxy resin panel

该装置安装于柜体前操作面板，由三只电流互感器和一只零序互感器提供电流信号，通过指示灯显示电缆侧的接地或者相间短路故障，并可通过光纤将故障信号远传于远程控制中心。

The device installed in the cabinet and shows on the front operation panel, by the three current mutual inductance device provides current signal and a zero sequence current transformer, through the light and show the side of the cable grounding or short circuit fault, and it would transmit the fault signal to remote control center via the optical fiber.



* 电流温度显示故障指示器 Current temperature display fault indicator

AEP-EKL4型温度显示故障指示器是电缆系统用于监测短路故障、接地故障、三相实时电流、三相电缆温度的装置。该装置通过DTU/RTU定时轮询的方式远传传感器检测到的数据。并且把三相电流数值、三相电缆温度数值和故障告警后的标识适时直观显示在液晶屏上。以实现故障判断、电流和温度的远程适时监控和本地显示。

AEP - EKL4 temperature display fault indicator is used for cable system, grounding fault, three-phase short-circuit fault monitoring device for real-time current, three-phase cable temperature. The device transfer sensor detected data via the DTU/RTU regularly polling way. And the three phase current, three-phase cable temperature values and fault alarm after the identity of the timely visual display on the LCD screen. To realize the fault diagnosis, current and temperature of the remote monitoring and timely local display.

AEP-EKL4温度电流显示面板型故障指示器由主机、三只短路电流温度传感器、一只接地电流温度传感器和一只电源适配器（DC24V转或AC220电源供电）组成。其短路电流温度传感器和接地电流温度传感器都通过电缆和主机连接。通过485总线可实现故障信息、电流和温度数据的适时远传。

AEP - EKL4 temperature display panel type current fault indicator by the host, three of short circuit current temperature sensor, a grounding current temperature sensor and a power adapter (turn or AC220 DC24V power supply). The short circuit current temperature sensor and the grounding current temperature sensor are connected through cable and the host. Can be realized fault information, current and temperature data timely remote transmission via the 485 bus.

主要功能 Main function

短路报警指示：短路传感器在工作中检测线路的电流，当线路发生短路故障满足短路故障判据时，短路传感器发出报警信号，当DTU/RTU轮询到传感器后，传感器告警数据上传至DTU/RTU，同时液晶主机接收到此信号后，产生相应的报警指示信号并在液晶屏上直观显示；

Short-circuit alarm indication: short circuit sensor detection circuit of current in the work, when the circuit fault meet the short-circuit fault condition, the short circuit sensor signal alarm, when DTU/RTU polling to sensors, sensor alarm data uploaded to the DTU/RTU, LCD after the host receives the signal at the same time, the corresponding alarm indication signal and visual display on the LCD panel;

接地报警指示：接地传感器在工作中检测线路的零序电流，当线路发生接地故障时，接地电流达到或超过接地电流的整定值时，接地传感器发出报警信号中，当DTU/RTU轮询到传感器后，传感器报警数据上传至DTU/RTU，同时液晶主机接收到此信号后，产生相应的报警指示信号并在液晶屏上直观显示；

Grounding alarm indication: sensor detecting circuit of zero sequence current in the work, when the ground fault occurs, the grounding current reach or exceed the current setting value, the earth sensor signal alarm, when DTU/RTU polling to sensors, sensor data uploaded to the DTU/RTU, after the host LCD receives the signal at the same time, the corresponding alarm indication signal and visual display on the LCD panel;

线缆温度指示：电缆体温在液晶屏上适时直观显示，并通过DTU/RTU远传。

Cable temperature indicating: cable temperature timely visual display on the LCD panel, and transmit remotely through the DTU/RTU.

负荷电流显示：实时显示线缆中负荷电流值，并通过DTU/RTU远传。

Load current: real-time display cables load current value, and transmit remotely through the DTU/RTU.

自动复位功能：当指示器发出报警信号后，如果无人工进行复位，在整定时间后，指示器可自动进行复位。

Automatic reset function: when the indicator alarm, if no manual reset, after the setting time, indicator can be reset automatically.

手动复位功能：当指示器产生报警后，可通过按下指示器主机面板上的“复位/测试”按钮保持1秒解除报警。

Manual reset function: after the alarm indicator, indicator by pressing the "reset/test" button on the host panel for 1 second to remove alarm.

自动化：液晶主机可接收DTU/RTU远传的复位信号，对液晶主机进行远程复位操作。

Automation: LCD host can receive DTU/RTU remote signal, so that to control the LCD host remotely reset operation.

电源转换模块：可以采用AC220V或DC24V电源为主机和传感器提供电源（根据用户需求）。

Power conversion module: AC220V or DC24V power supply for the host and sensor power supply (according to user requirements).

技术参数： Technical parameters:

使用范围：20KV以下等级系统中 Range of application: less than 20kv level in the system

短路电流报警：600A-100A连续可调；出厂设定为200A

The short circuit current alarm: 600A to 100A continuous adjustable; default: 200A

短路延时：20-300ms可调，出厂设定为60ms Short circuit delay: 20-300ms adjustable, factory set to 60 ms

接地电流报警：5A-60A连续可调，出厂设定为10A Grounding current alarm: 5A to 60A continuously adjustable, default: 10A

接地延时：20-300ms可调，出厂设定为50ms Grounding delay: 20-300ms adjustable, default: 50 ms

电流测量范围：0-600A Current measuring range: 0 to 600A

电压测量范围：-55℃~125℃ Voltage measuring range: 55℃~125℃

工作电源：DC24V Working power supply: DC24V

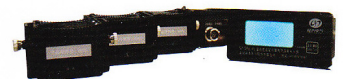
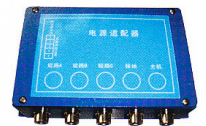
自动复位时间：1s~48h(出厂整定为8h) Automatic reset time: 1s~48h (factory setting: 8h)

指示器防护等级：主机IP40;传感器IP65 Indicator protection grade: host IP40; Sensor IP65

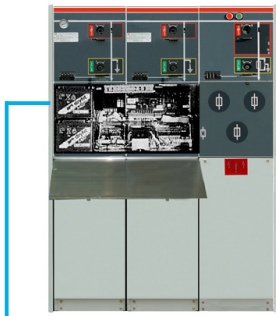
工作环境：-25℃~+75℃ Working environment: 25℃~+75℃

相对湿度：≤95% Relative humidity: 95%

三防处理：防水、防酸、防盐雾 Anti-corrosion treatment: waterproof, acid proof, prevent salt fog



附件 Accessories:



遥控和监测单元
Remote control and monitoring unit

1. **辅助接点** Auxiliary connecting points
在所有的负荷开关和断路器上都配备2NO+2NC指示开关位置。一个并联脱扣线圈 (AC或DC) 可以安装到变压器开关/断路器上。低压控制部件位于前面板后面。

On all the LBSs/CBs, you can install 2NO+2NC to indicate switch position
1 paralleling tripping coil (AC or DC) can be installed on the transformer switch/CB, low voltage control parts are set behind the front panel.

2. **遥控和监测单元** Remote control and monitoring unit
可以配备集成遥控和监测单元。(参见左图)

You can equip integrated remote control&monitoring unit (see the picture on the left)
这个单元是一个预装式的产品，它可以组装成一个复杂或新的解决方案，或者直接交付工厂来完成，只是要在开关顶部加一下低压箱。

It is a performed unit. It can be assembled into a complicated or a new solution, or to add only a low voltage case is required on the top of switch if the work is done in our factory

3. **电压指示** Voltage indicator

电容性电压指示器显示套管是否带电，其上的插口可用二核相。

Capacitive voltage indicator shows if the bushing is electrified, upper socket can be used for phase detection

4. **短路/接地故障指示器** Short circuit/earth fault indicator

为了便于故障定位，电缆开关模块可以装备短路/接地故障指示器，进行简单的故障检测。

To locate the fauts easily, cable switch module can equip short circuit/earth fault indicator, to detect normal faults

5. **电动操作** Motorized mechanism

对于电缆开关与变压器单元手动操作机构是标准的方案。也可以选择安装电动操作机构。电缆开关、真空断路器和接地开关都是通过位于前面板后面的机构进行操作的。对于氖开关和断路器，都可以通过操作手柄操作 (标准配置)，或者可以配备马达操作机构 (附件)。但是接地开关只能手动操作，并且配置了有关合故障电流能力的机构。

Manual mechanism is a standard program for the cable switch and the transformer motorized mechanism is an optional choice. All the operations on cable switch/transformer/earth switch is done by the mechanism behind the front panel. Neon switch and circuit breaker, can be operated by the handle(standard), or can equip motorized operating mechanism (Optinal), but earth switch can only be operated munually, but it is configured config with making and breaking capability mechanism.

6. **电缆连接** Cable connection

标准套管距离地面的高度都相同，并且外有电缆室盖板保护，此盖板可以与接地开关互锁，对于双电缆进线，还可以采用专门的双电缆室盖板。

Sandard bushings have the same height from the ground, and are protected by the external door of cable section, which can interlock with the earth switch. The double cable incoming have a special double cable section door

7. **压力指示器** Pressure indicator (meter)

通常配备压力指示器，该指示器为压力表形式，此外也可以配备电气触点来指示压力降低。

The switch is often equipped with pressure indicator. It's a manometer, besides it can equip an electrical contactor to indicate pressure down

8. **钥匙锁** Lock by keys

可以安装用于断路器、负荷开关以及接地开关的钥匙锁。

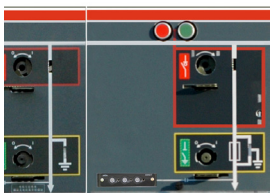
Lock with keys can be installed onto CB, LBS and Earth switch

9. **电流互感器** current transformer

通常配备保护、测量监控用。安装方式分固定式和电缆式安装两种。

Usually equipped for protection, measuring and monitoring

Two installing methods: fixed and cable



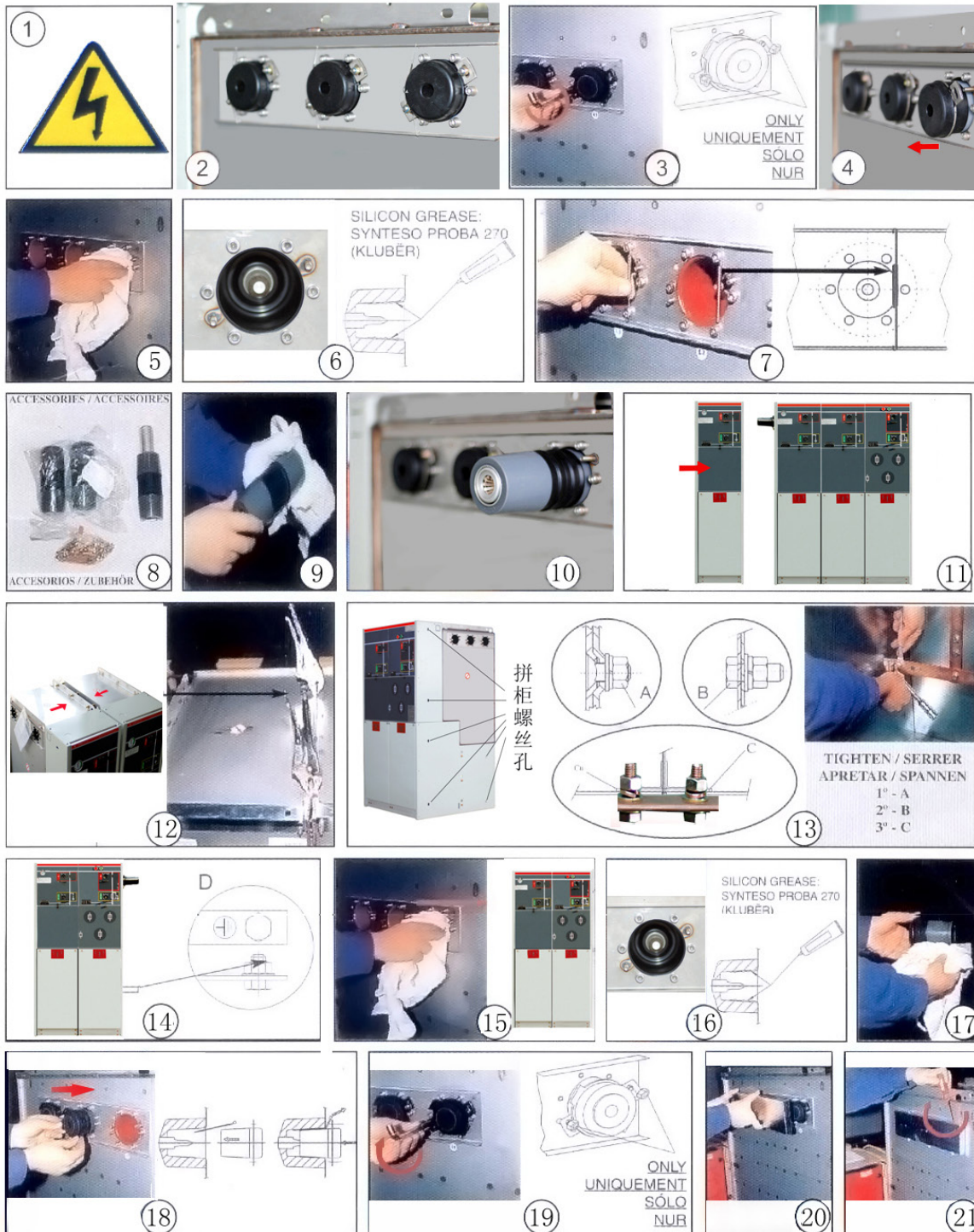
电容性电压指示器
Voltage indicator



电缆连接
Cable connection



压力指示器
Pressure indicator

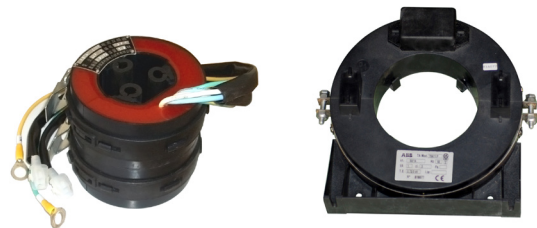
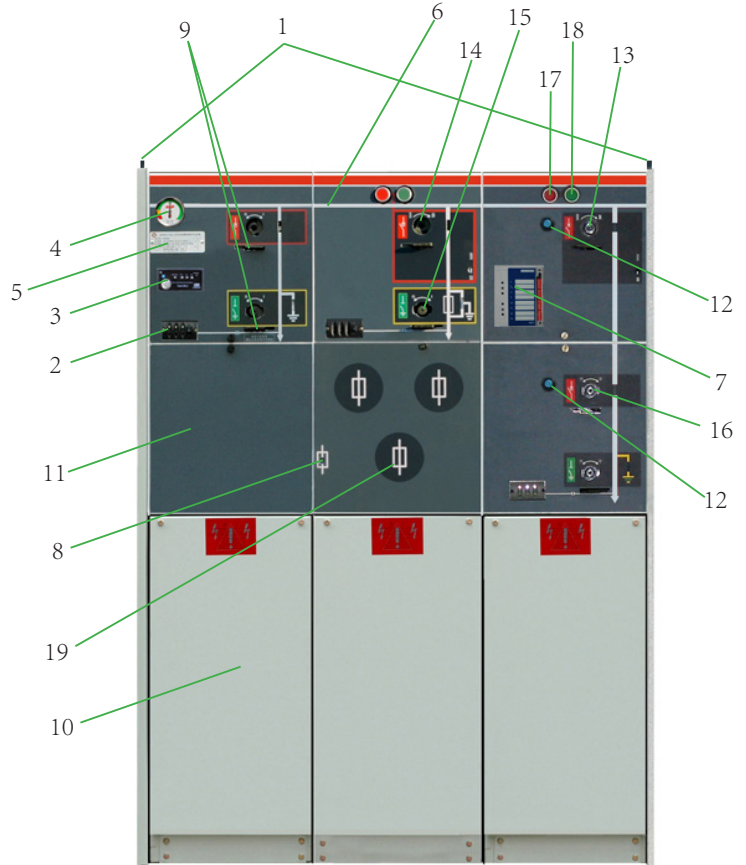


- 1.操作前切断电源 Cut off power before operating.
- 2.连接器绝缘盖 Connector
- 3.松开绝缘盖 Unlock screw
- 4.拉出绝缘盖 Pull out insulate cover
- 5.清洁连接器座 Clear connector base
- 6.涂硅胶 Silicon
- 7.安装接地弹簧 Install earth spring
- 8.连接器套管 Cnnecte bushing
- 9.清洁 Clear
- 10.安装连接器套管 Install connecte bushing

- 11.拼柜 Connection
- 12.柜顶拼装 Top connection
- 13.安装拼柜螺丝 Install connecte screw
- 14.拼柜累丝 Connecte Screw
- 15.清洁 Clear
- 16.涂硅胶 Silicon
- 17.清洁绝缘器盖 Clear insulate cover
- 18.安装绝缘器盖 Install insulate cover
- 19.紧固螺丝 Screw up
- 20.安装盖板 Cover
- 21.上紧螺丝 Screw up

SRM16-12/24型智能开关柜结构图

1. 吊环
Hanging ring
2. 电容性电压指示器
Capacitive voltage indicator
3. 短路接地故障指示器 (附件)
Indicator of short circuit earth fault (option)
4. 压力指示器
Pressure indicator
5. 具有序列号的标牌
Serial number label
6. 模拟线路图
Simulative line diagram
7. 自供电型继电器
Self-powered relay
8. 熔断器熔断指示器
Indicator for fuse burning out
9. 面板上的挂锁装置
Lock hanging on the panel
10. 电缆室
Cable section
11. RTU211安装室
RTU211 install section
12. 钥匙锁 (附件)
Lock with keys (option)
13. 断路器操作孔
Operating hole of Circuit breaker
14. 负荷开关操作孔
Operating hole of Load switch
15. 接地开关操作孔
Operating hole of earth switch
16. 隔离开关操作孔
Operating hole of insulating switch
17. 分闸按钮
Breaking button
18. 合闸储能按钮
Making stored energy button
19. 熔断器室
Fuse section



故障指示器

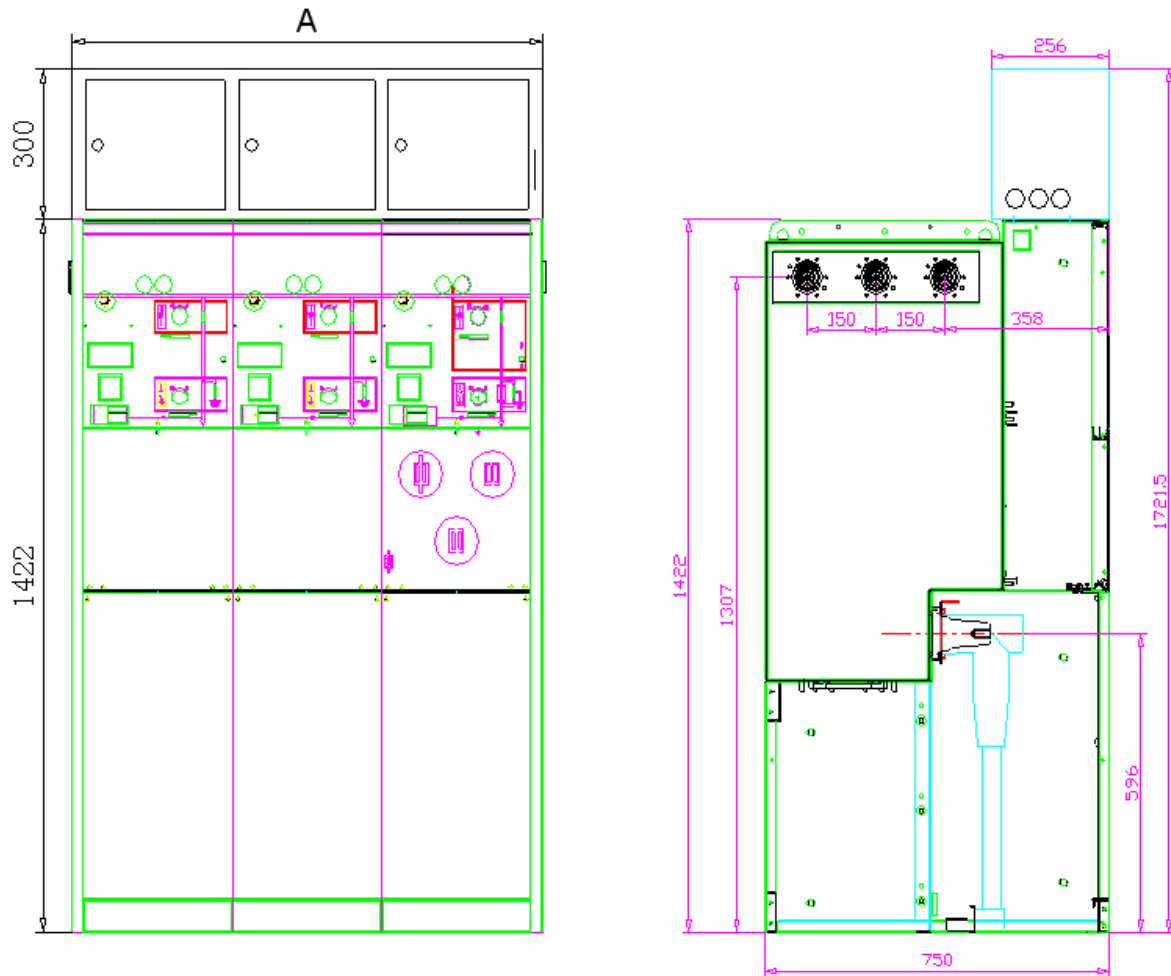
Indicator of short circuit earth fault

穿心CT

Straight-through current transformer

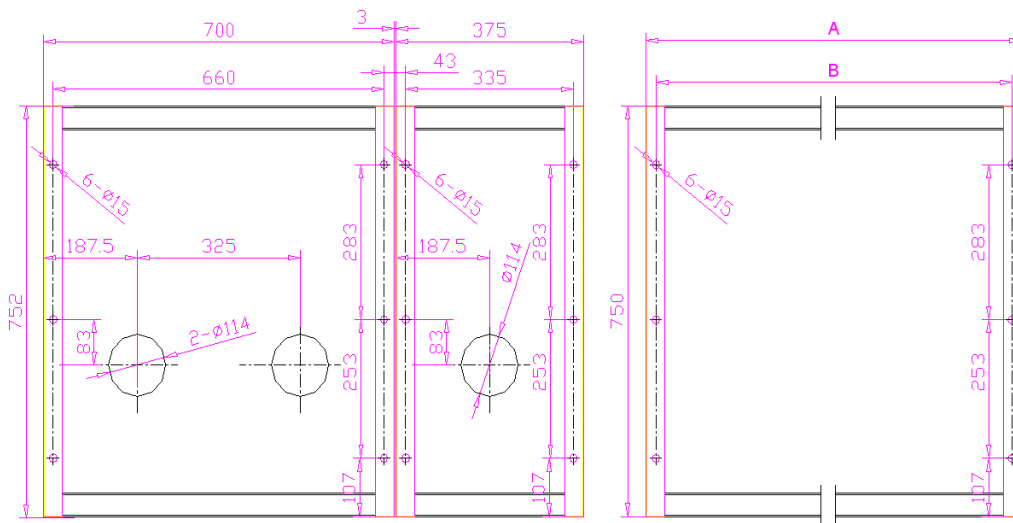
SRM16-12/24型智能开关柜外形尺寸

SRM16-12/24 type gas insulated switchgear external dimension



地基安装图

底座必须平整。根据模块数或单元数确定尺寸图，紧固在地脚螺栓上。

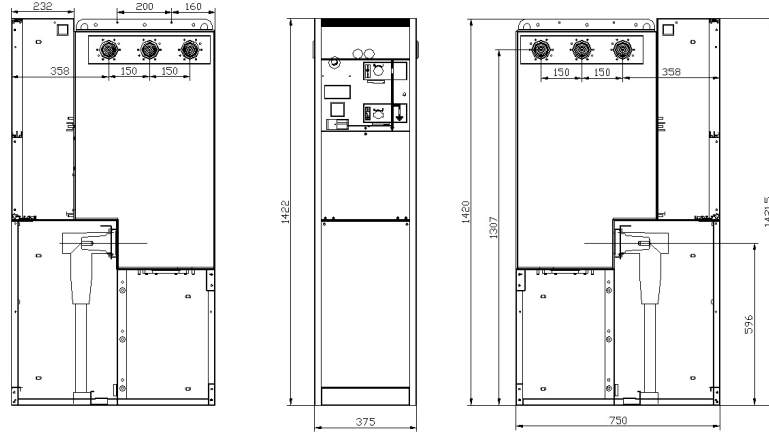


Unit	A	B
1单元	375	335
2单元	700	660
3单元	1025	985
4单元	1350	1310

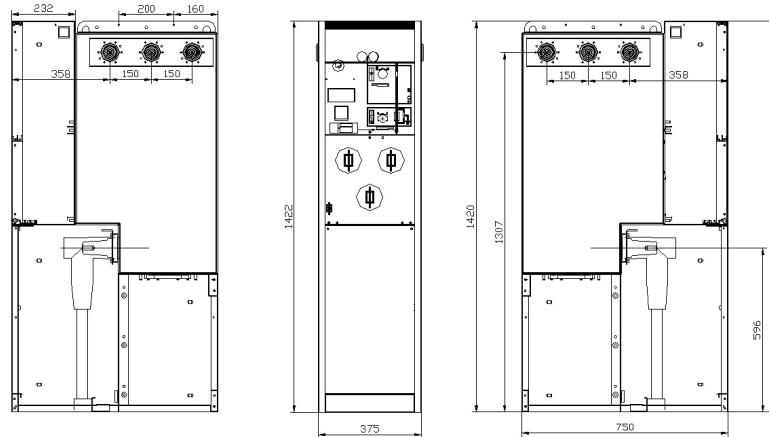
SRM16-12/24型侧扩展智能开关柜外形尺寸

SRM16-12/24 type gas insulated switchgear external dimension

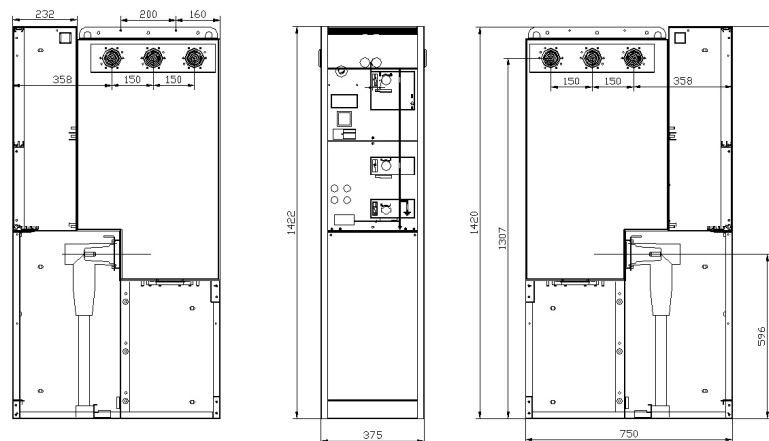
C
单
元



F
单
元



V
单
元



质量保证 QUALITY GUARANTEE

每一台环网柜都来自于专业的技术人员与高精度的工艺装备，以确保每一台产品的生产精度、生产进度与生产效率。

Each ring main unit was manufactured from the professional technical personnel and high-precision technology and equipment, to ensure that each product production precision, production schedule and production efficiency.

体系认证 MANAGEMENT SYSTEM CERTIFICATION

质量体系认证: ISO9001:2000

Quality system certification: ISO9001:2000

环境体系认证: ISO14001:2004

Environment system certification: ISO14001:2004

职业健康体系认证: GB/T28001-2001

Occupational health system certification: GB/T28001-2001

◆ 公司所有职能部门采用ERP管理系统，严格执行标准流程。

All the company functional departments adopt ERP management system, strictly implement standard process.

◆ 公司的所有商务、营销、生产、特流、财务等部门已通过

GB/T19001-2000-ISO9001:2000标准

All the company business, marketing, production, such as special working flow, financial department has passed GB/T19001-2000 - ISO9001:2000 standards.

◆ 所有生产、检测物流体系已通过ISO14001:2004标准

All the production, detection and logistics system has passed the ISO14001:2004 standard.



系统检验 SYSTEM TEST

每一台产品制造及出厂前都已通过系统化严格检验，确保检验质量。包括：

Every product has passed the systematic rigid inspection before the factory, to ensure the quality of inspection. Include:

- ◆ 腐蚀性盐水喷雾试验 Corrosive salt spray test
- ◆ 合/分速度测量 Close/open speed measurement
- ◆ 工频耐压试验 Power frequency withstand voltage test
- ◆ 高温低温试验（部分重要元器件）
High temperature and low temperature test (Specific important components)
- ◆ 局部放电试验 Partial discharge test

质量检验部门负责对每台半成品及成品进行系统检验记录，发放检验合格证及产品出厂试验报告。

The quality inspection department is responsible for system on each semi-finished products and finished products inspection records, issue inspection certificate and product factory test report.



产品的维护及贮存 Transportation and Storage

- ◆ 包装好的充气柜在运输和装卸时，不准倒置、强烈振动和碰撞；

During the transportation and load/unload, do not upside-down, severe vibration or impact.

- ◆ 充气柜应贮存于干燥、通风、防潮及防有害气体侵蚀的室内或有遮蔽的仓库内，长期存放应在传动部位涂黄油，并定期检查环境是否符合要求，产品贮存年限为15~20年；GIS should be stored in a dry, airing, damp and harm gas proof indoor or warehouse, for long term storage, the moving parts should be greased, and regular environment check is required, and its life is 15- 20 years.

- ◆ 运行中的产品每隔3~5年进行小检一次，主要检查机构部分运动件的磨损情况和紧固件有无松动，清除绝缘表面灰尘，在活动部位注入一些润滑脂。

Product in running also requests regular check per 3-5 years, mainly check the wearity of moving parts and loose of fixing parts, clean dust on the insulate surface, and inject some grease to the moving parts.

随机文件 Documents with product from manufacturer

- ◆ 产品合格证 Certificate of qualification
- ◆ 产品使用说明书 Installation manual
- ◆ 装箱单 Packing list

订货须知 Ordering instructions

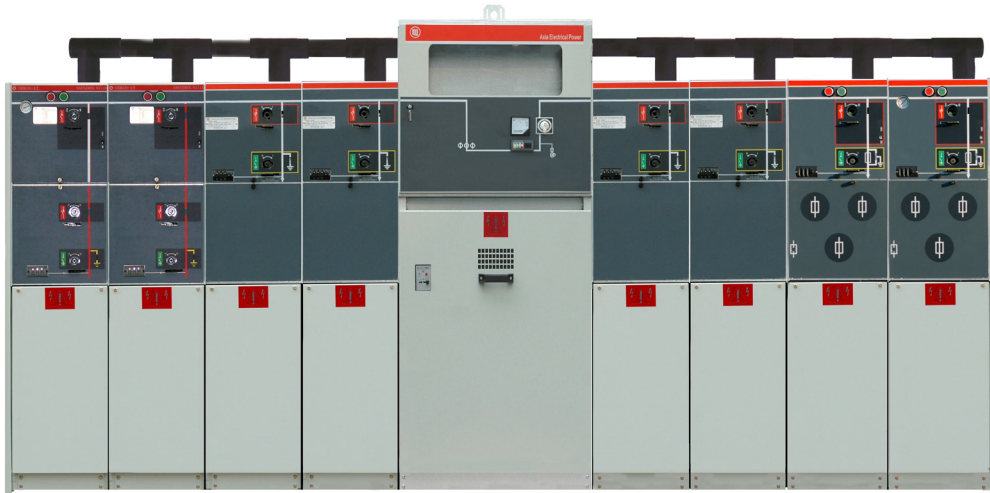
用户订货时须说明：

Belowing terms should be marked while ordering:

- ◆ 产品型号、名称及参数
Model number, product name and mechanical requirements
- ◆ 数量及交货期
Quantity and delivery expected
- ◆ 其他特殊运行要求
Other special running requirements
- ◆ 备品、备件的名称及数量
Spare parts and accessories required and quantity

注:本公司保留改动外形尺寸不另行通知的权利

Note:we have the right to modify dimension without notify



AEP 亚洲电力设备(深圳)股份有限公司
ASIA ELECTRICAL POWER EQUIPMENT (SHENZHEN) CO.,LTD.

Address: AEP Industrial Park, Songgang Road, Baoan District, Shenzhen, China

400 Hotline: 400-8806639

Service: +86-0755-28231980

Telephone: +86-0755-28231993

Fax: +86-0755-28231913

Website: www.aepe.com.cn

E-mail: sales@aepe.com.cn